

# Network Solution Guide


## Typical Network Topology

- Ethernet / Max Dist. 328' (100m)
- Cat5e or better - recommended (Cat6a required for full Gigabit at 100m)
- Shielded cable on runs over 100' (30.5m) - recommended
- 10/100/1000 Mbps
- Typical Network Speed - 1 GHz

- VLAN 1 - Management/Main
- VLAN 2 - Guest, QoS-Bulk
- VLAN 3 - PoS, QoS-Priority
- VLAN 4 - Security

### Need help designing a network for your install?

TAKE ADVANTAGE OF OUR FREE NETWORK DESIGN SERVICES!

 **Learn More about our Customer Assurance Program**

#### Parts List

Description	Model #	QTY
Epic 5 Gigabit Router - Rear Ports	ABR-5000	1
AV Series 26 Port/24 PoE+ Gb Managed (250W)	AMS-2624P	1
Eight Outlet Intelligent PDU	RLNK-915R	1
Wireless Controller, Managed up to 32 APs	XWC-2000	1
High Power Wireless AC1200 Dual Band Outdoor WAP	XAP-1440	3*
High Power Wave 2 AC3100 Dual-Band WAP	XAP-1610	5*

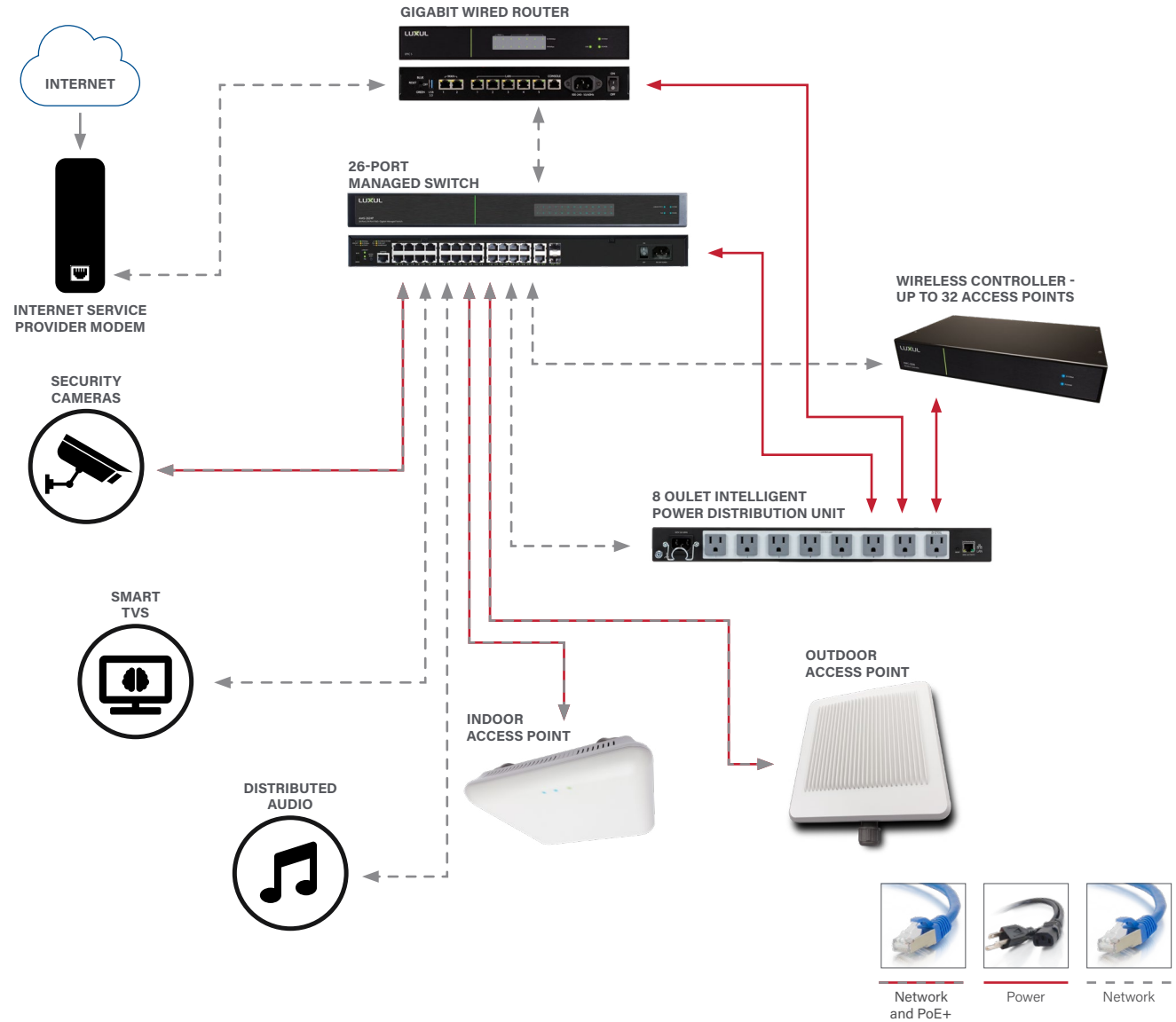
\* Number of WAPs depends on building materials and overall space of project and will vary.



**Download the BOM**

PRODUCT LINKS | PRICING

# RESTAURANT



LUXUL | legrandav.com  
NORTH AMERICA 800.572.2011 av.luxul.techsupport@legrand.com

Chief | Da-Lite | Luxul | MAP | On-Q | Sanus