

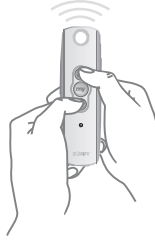
Altus 6 Step Visual Reference Guide

Remain clear of moving products when performing these operations.

STEP 1

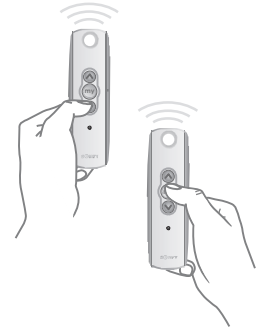
Initiate programming by pressing both the **UP** (▲) and **DOWN** (▼) buttons at the same time until the motor jogs.*

NOTE: After every command the motor will jog to confirm.



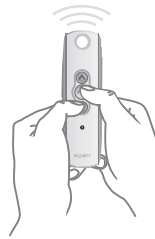
STEP 2

Check the direction of operation. Press and hold the **DOWN** (▼) button and confirm it moves the motor down or out (the motor will be in momentary mode). To change the direction, press and hold the **MY** (my) (stop) button until the motor jogs.



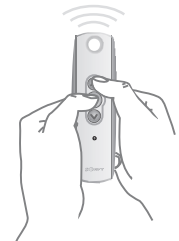
STEP 3

Bring the motor to your desired upper limit. Press and hold the **MY** (my) and **DOWN** (▼) buttons until the motor moves DOWN, then release. Stop the motor where the LOWER limit should be set, you can adjust by pressing the (▲) or (▼) buttons. *For larger units, set limit at 1/2 down or out position initially. Finalize programming and allow motor to rest for 10 minutes. Then follow steps below to adjust to final outer limit.*



STEP 4

Press and hold the **MY** (my) (stop) and **UP** (▲) buttons until the motor starts to move up, then release. The motor will stop at the original upper point.



STEP 5

Press and hold the **MY** (my) (stop) button until the shade jogs to confirm the limit setting.



STEP 6

Press and hold the **Program** button on the back of the transmitter until the motor jogs. It will now operate in a maintained fashion. Double check the limits as a precaution.



*Jog - Brief **back and forth** or **up and down** movement from the motor.

To Adjust Limits

To change a limit: Move the motor to its current limit position to be changed and let it stop. Press the **UP** (▲) and **DOWN** (▼) buttons simultaneously until the motor jogs, then release. Adjust to a new limit position. Press the **MY** (stop) button until the motor jogs, then release. Check the new limit.

To add a remote/channel or sun or wind sensor: First select the remote/channel that is already programmed to the motor and press the program button on the back until the motor jogs. Then select the remote/channel/sun or wind sensor that you would like to add and press the program button on that until the motor jogs.

To reset a previously programmed motor: you will need to disconnect power (120V AC) for 2 seconds, reconnect for 10 seconds, disconnect for another 2 seconds and reconnect. The motor should start to move/jog and then stop on its own (if this does not happen, continue to perform the disconnects until it does). Once the motor stops, press and hold the programming button on the back of the remote and count to ten without letting go. The motor should jog twice.

If using a multi-channel remote, begin by selecting channel to be changed.

Please contact SOMFY at 877-2250MFY or www.somfypro.com for detailed installation instructions.

